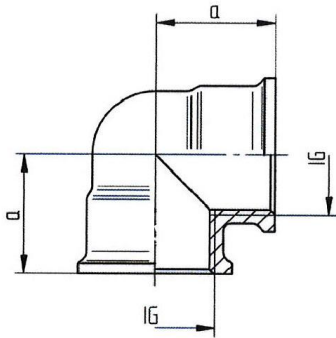


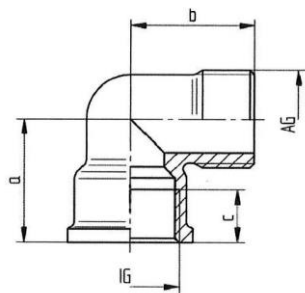
Operating temperature: max. 120 °C
Operating pressure: max. 16 bar



WST34MS90II

90° elbow, female/female

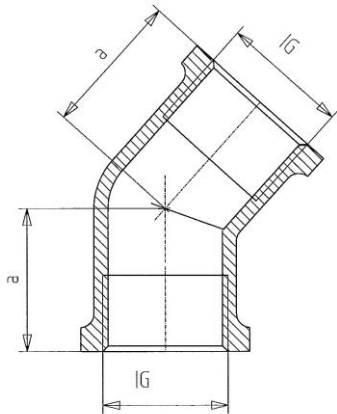
Art. No.	Type No.	Thread	a mm
194100	WST14MS90II	G 1/4	19.0
194101	WST38MS90II	G 3/8	24.0
194102	WST12MS90II	G 1/2	25.0
194103	WST34MS90II	G 3/4	29.0
194104	WST10MS90II	G 1	34.5
194105	WST114MS90II	G 1 1/4	47.0
194106	WST112MS90II	G 1 1/2	50.0
194107	WST20MS90II	G 2	58.5



WST34MS90IA

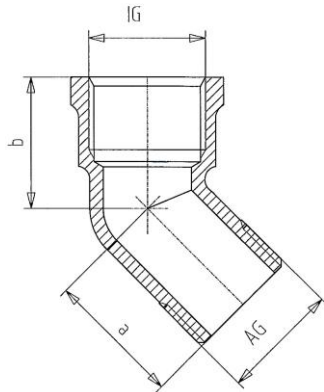
90° elbow, female/male

Art. No.	Type No.	Thread	a mm	b mm	c mm
194108	WST14MS90IA	G 1/4	24.5	27.5	10.5
194109	WST38MS90IA	G 3/8	22.0	35.5	11.0
194110	WST12MS90IA	G 1/2	23.0	32.0	13.0
194111	WST34MS90IA	G 3/4	26.0	41.0	12.0
194112	WST10MS90IA	G 1	30.0	49.5	15.0
194113	WST114MS90IA	G 1 1/4	38.0	53.5	17.0
194114	WST112MS90IA	G 1 1/2	41.0	57.0	18.0
194115	WST20MS90IA	G 2	54.0	65.0	24.0


WST34MS45II

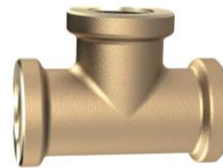
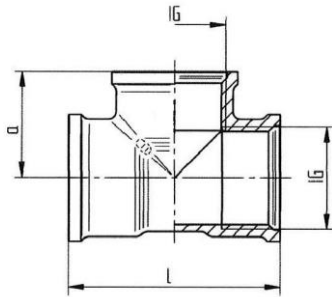
45° elbow, female/female

Art. No.	Type No.	Thread	a mm
194116	WST12MS45II	G 1/2 x G 1/2	23.5
194117	WST34MS45II	G 3/4 x G 3/4	24.0
194118	WST10MS45II	G 1 x G 1	30.5


WST34MS45IA

45° elbow, female/male

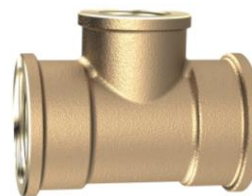
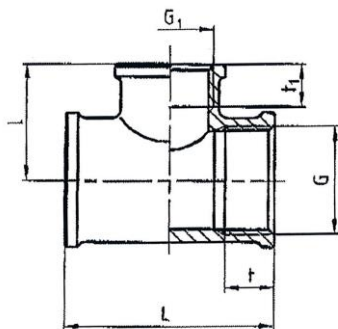
Art. No.	Type No.	Thread	a mm	b mm
194119	WST12MS45IA	G 1/2 x G 1/2	28.0	23.0
194120	WST34MS45IA	G 3/4 x G 3/4	28.0	23.0
194121	WST10MS45IA	G 1 x G 1	34.5	30.5



TST34MSIG

Tee, 3 x female thread

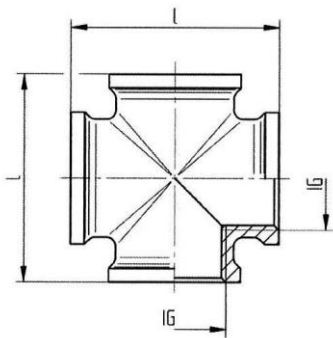
Art. No.	Type No.	Thread	l mm	a mm
194122	TST14MSIG	G 1/4	40.0	20.0
194123	TST38MSIG	G 3/8	48.0	24.0
194124	TST12MSIG	G 1/2	53.0	27.0
194125	TST34MSIG	G 3/4	60.0	30.0
194126	TST10MSIG	G 1	66.5	33.0
194127	TST114MSIG	G 1 1/4	90.0	45.0
194128	TST112MSIG	G 1 1/2	93.0	46.5
194129	TST20MSIG	G 2	101.0	50.5



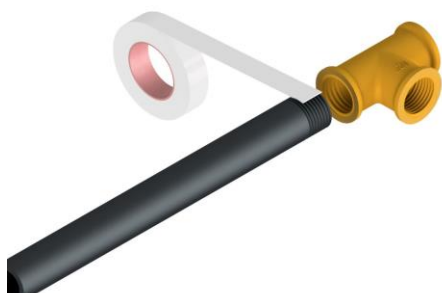
TRED101210MSIG

Unequal tee, 3 x female thread

Art. No.	Type No.	Thread G	Thread G ₁	t mm	t ₁ mm	l mm	L mm
194130	TRED341234MSIG	G 3/4	G 1/2	12.0	10.5	28.5	51.0
194131	TRED101210MSIG	G 1	G 1/2	12.5	10.5	33.0	66.6
194132	TRED103410MSIG	G 1	G 3/4	12.5	12.0	33.0	66.6


KST34MSIG
Cross, 4 x female thread

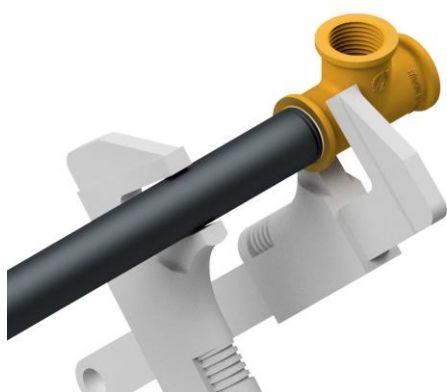
Art. No.	Type No.	Thread female	l mm
194133	KST12MSIG	G 1/2	52.0
194134	KST34MSIG	G 3/4	61.0



To obtain a better seal in the fitting, place a layer of insulating material (hemp not recommended) over the thread to be connected



To avoid possible breakages due to excessive screwing, please check the above mentioned coating for excess.



Connect the fitting to the line. Make sure that the line is not overtwisted in the fitting. To do this, please check the thread length of the fitting and do not screw the pipe beyond this length. Avoid possible deformation of the fitting and the pipe by overtightening with pipe wrenches.